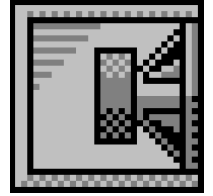


# Custom Vented Box Design

By karsten, cad



## Box Properties

### --Description--

Name: 1x15 sub comparison

Type: Vented Box

Shape: Prism, square

Finish: black warnex

Veneer: 15mm birch ply

### --Box Parameters--

Vb = 110,8 liters

V(total) = 114,9 liters

Fb = 53, Hz

F3 = 55,42 Hz

Fill = minimal

### --Vents--

No. of Vents = 1

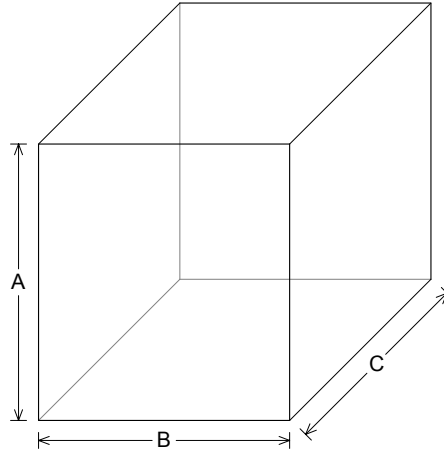
Vent shape = rectangle

Vent ends = one flush

Hv = 55, mm

Wv = 425, mm

Lv = 131,2 mm



### --External Dimensions--

A = 550, mm

B = 500, mm

C = 530, mm

### --Internal Dimensions--

A = 520, mm

B = 470, mm

C = 470, mm

### --Wall Thickness--

Front = 45, mm

Side = 15, mm

## Driver Properties

### --Description--

Name: BX15-2560

Type: Standard one-way driver

Company: Celestion International Ltd.

Voice Coil: 2.5 in, copper on Kapton former

Magnet: 50 oz

### --Configuration--

No. of Drivers = 1

### --Driver Parameters--

Fs = 45, Hz

Qms = 7,517

Vas = 188, liters

Xmax = 2, mm

Sd = 850, sq.cm

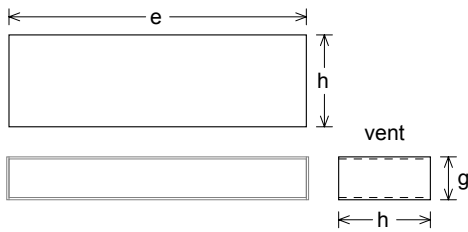
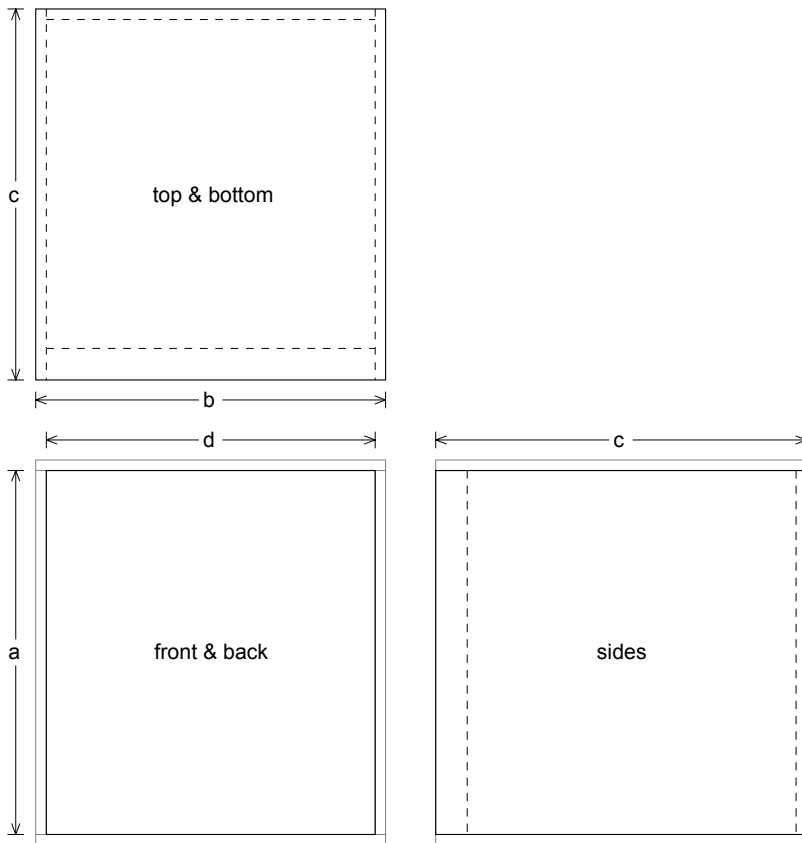
Qes = 0,419

Re = 5,61 ohms

Le = 0,88 mH

Z = 8, ohms

Pe = 250, watts



**Box Parts**

Box Shape: Square Prism

1 Top, 1 Bottom: depth (c) = 530, mm  
width (b) = 500,, thickness = 15, mm

1 Front: height (a) = 520, mm  
width (d) = 470,, thickness = 45, mm

1 Back: height (a) = 520, mm  
width (d) = 470,, thickness = 15, mm

2 Sides: height (a) = 520, mm  
depth (c) = 530,, thickness = 15, mm

--Driver Mounting--  
Mounting: Flush

--Vent Parts--

1 Top, 1 Bottom:  
width (e) = 425,, length (h) = 131,2 mm  
thickness = 3,175 mm

2 Sides:  
height (g) = 61,35, length (h) = 131,2 mm  
thickness = 3,175 mm

